

Install the AutoPASS tag in the correct place. The windscreen must be clean, warm and dry.



The AutoPASS tag is developed by Q-Free ASA.

It is easy to install the AutoPASS tag. Just follow the instructions below, and the tag will work as it should and not fall off.



The Norwegian Public Roads Administration is implementing a new technology for automatic toll collection.

The long term aim is to create a coordinated system throughout the Nordic region and the rest of Europe.

www.vegvesen.no/autopass

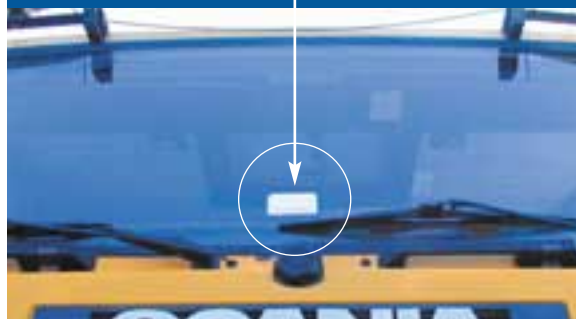
Motor Cars

The tag must be placed on the inside of the windscreen, at least 7 cm away from the top and behind the rear view mirror (hidden from the driver).



Lorries and Buses

The tag must be placed on the inside of the windscreen towards the bottom edge. At least 10cm of empty space must be left around the tag. NB! The windscreen wipers (when not in operation) should not lie over the tag.



Use the wet serviette enclosed and wash thoroughly around where the tag is to be fixed. Soap or other types of serviettes/clothes must not be used. Wipe the glass completely dry with the enclosed dry serviette.



Remove the backing paper from the tag's adhesive strip. Avoid touching the adhesive surface.



Press the tag's adhesive strip against the windscreen and hold for about 10 seconds. The whole strip must be in contact with the windscreen.

The temperature of the windscreen and the tag must be at least 15°C at the time of installation to ensure that the glue sticks securely. Put on the vehicle's heating if the weather is cool and the windscreen is wet.

It is not permitted to move the AutoPASS tag between different vehicles. The tag number is tied to the vehicle. Moving a tag can lead to an extra charge. (For toll systems using tags of many colours separate rules apply.)

When purchasing a new vehicle transfer the tag over to the new vehicle and notify the toll operator of the number of the new vehicle. New adhesive strips can be obtained from your dealer/toll operator.

Should you have a new car with metal film in the windscreen you must place the tag in the area designated for payment tags. If you experience problems with installing or using your tag notify your toll operator. AutoPASS tags are battery operated. The expected lifetime is more than 5 years. When the battery is almost empty the toll operator will warn you to change the tag.